

## Investigation of *Mycoplasma* Species in Diseased and Healthy Calves and Heifers in Al-Najaf Province, Iraq

Khaleel Zainel Khaleel Al-Alo<sup>1</sup>, Ayyed Bajee Hassan Alzwghaibi<sup>2</sup>, Hassan Khalaf Ulaiwi Al-Karagoly<sup>3</sup>, Salim Naama Salih Albukhaty<sup>4</sup>

<sup>1</sup>Department of Veterinary Clinical Sciences, Faculty of Veterinary Medicine, University of Kufa, Iraq, Najaf, Iraq;

<sup>2</sup>Faculty of Veterinary Medicine, Al Qasim Green University, Babylon, Iraq;

<sup>3</sup>Department of Internal and Preventive Medicine, College of Veterinary Medicine, University of Al-Qadisiyah, Diwaniyah, Iraq;

<sup>4</sup>Department of Basic Sciences, University of Misan, Maysan, Iraq

**Keywords:** *Mycoplasma*, ocular lesions, cattle, Iraq.

**Abstract.** *Mycoplasma* infections are among the most common causes of eye infection in cattle worldwide. The purpose of this work was to use a DNA-based method to investigate the presence of *Mycoplasma* spp. in the conjunctival sac of diseased and healthy calves and heifers. Between May 2018 and August 2019, a total of 116 eye swab samples were taken from seven industrial dairy farms in Al-Najaf province, where 85 samples were collected from diseased animals and 31 from healthy animals. Concerning the PCR test, 6.4% and 28.2% were respectively positive for healthy and diseased animals. Conjunctivitis, keratoconjunctivitis and corneal ulcers were reported in 52%, 31% and 17% of the diseased group, respectively. In conclusion, *Mycoplasma* spp. important bovine pathogen causing multiple eye lesions that can not be identified due to their asymptomatic nature.

### Introduction

Corneal and conjunctival infections are amongst the most common eye diseases in livestock worldwide. A predisposing eye infection was considered to be eye irritation caused by exposure to sunlight, dust, pollen, seeds, and buds. Most cases of ocular lesions show corneal ulcers, corneal blindness, corneal oedema, light anxiety, blepharospasm, and abundance of tear excretion (Underwood et al., 2015, Brooks et al., 2017).

*Mycoplasma* is one of the main pathogens affecting a competitive animal health condition in most countries (Nicholas & Ayling, 2003). *Mycoplasma* exploits chronic diseases that affect the animal, leading to the suppression of the body's general immune status, providing an appropriate environment for infection with different *Mycoplasma* species. In cattle, various *Mycoplasma* species are considered to be a real cause of mastitis, respiratory tract infections, arthritis, genital tract infections, otitis, keratoconjunctivitis, and abortion (Maunsell & Donovan, 2009, Calcutt et al., 2018), which leads to massive economic losses in the sector of animals worldwide (Aebi et al., 2012, Matilda et al., 2018, Loria et al., 2018).

*Moraxella bovis* is indeed among the most common causes of eye diseases in cattle, but mycoplasma is no less harmful. Other pathogens like *Moraxella ovis* and *Chlamydia species* are also regarded as a common cause. *Mycoplasma* has many species, including *M. agalactiae*, *M. bovis*, *M. californicum*, *M. bovirhinis*, *M. alkalescens*, *M. mycoides*, *M.*

*dispar*, *M. canadense*, *M. bovigentialium*, *M. conjunctivae*, and *M. bovoculi* (Loria et al., 2018, Salih & Rosenbusch, 2001, Nicholas et al., 2000).

*Mycoplasma* alone can cause an ocular lesion in cattle, but a mixed infection with *Moraxella bovis* may increase the severity and pathogenicity of the disease (Alberti et al., 2006, Gould et al., 2013).

*Mycoplasma* is a self-reproducing microorganism that is recognized as the smallest one. They spread globally, either as free-living or as parasites of humans, animals and plants (Razin, 1992). *Mycoplasmas* are phenotypically distinct from other bacteria by their minute size and complete absence of a cell wall, as well as restricted metabolic ability (Razin et al., 1998). Using antibiotics such as penicillin that inhibit cell wall synthesis is futile in treating mycoplasma diseases because it lacks the cell wall (Klößner et al., 2016, Naveed et al., 2020).

Because of restricted genetic potency of mycoplasmas, they need a complicated growth medium to consist of the medium enriched with peptone, yeast extract, animal serum and animal cell (Smith, 2012, Gerdtzen, 2017). There is a limited condition for mycoplasma growth, such as a specific host, a specific tissue and a specific organ, that reflects the precise nutritional character (Volokhov et al., 2011)

In order to control mycoplasma infections, a precise diagnosis must be made and suspected animals must be excluded from the herd because there is no effective vaccine against mycoplasma infections (Nicholas et al., 2008b, HA, 2013).

In addition to the shared antigenicity among pathogenic and non-pathogenic mycoplasmas, the costly and time-consuming culture of mycoplasmas make diagnosis difficult by routine technique (Pilo et al., 2007, Smith, 2012). The PCR test provides a more

Correspondence to Hassan Al-Karagoly, Department of Internal and Preventive Medicine, College of Veterinary Medicine, University of Al-Qadisiyah, Diwaniyah, Iraq  
E-mail: hassan.aliwee@qu.edu.iq

precise method of mycoplasma detection in both acute and chronic infections and offers a greater scope for detection than culture and serological methods (Rossetti et al., 2010, Touati et al., 2014).

The occurrence of mycoplasma in Iraqi cattle is unclear, and not all diagnostic laboratories do isolate mycoplasma generally. For this reason, a DNA-based approach was employed to identify the presence of *Mycoplasma* spp. in the conjunctival sac of diseased and healthy calves and heifers.

## 2. Materials and Methods

### 2.1. Sample collection

A total of 116 eye swab specimens were collected from 85 diseased and 31 healthy animals during the study period between May 2018 and August 2019. The samples were taken from calves and heifers (6-2 months) of Holstein Friesian breed from 7 industrial dairy farms in Al-Najaf province-Iraq and transported by a cold chain to the laboratory. Clinical symptoms of the affected animals were reported. Furthermore, clinical cases were divided into three categories according to complication severity: conjunctivitis as a single sign; conjunctivitis and keratitis without corneal ulcers; conjunctivitis and keratitis involving a visible corneal ulcer.

The eye swab samples were taken from the conjunctival sac using sterile cotton moistened with sterile normal saline and stored in sterile tubes containing 1.5 mL of saline phosphate buffer and an ice pack for transfer to the laboratory to be stored at  $-70^{\circ}\text{C}$ .

### 2.2. Preparing of DNA samples

DNA was extracted from the eye swab samples according to the protocol (Sinagen DNPTM kit) (SinaClonBioScience-Tehran, Iran).

### 2.3. PCR test

A 280 bp fragment of a highly conserved 16s rRNA coding region of mycoplasma genome was amplified using *Mycoplasma* spp. PCR detection Kit primer (SinaClonBioScience Company, Tehran, Iran). For this purpose, a final volume of 25  $\mu\text{L}$ , consisting of 20  $\mu\text{L}$  PCR MIX, 0.2 $\mu\text{L}$  Taq DNA polymerase and 4.8  $\mu\text{L}$  DNA sample, was prepared in a PCR tube on ice. The 20  $\mu\text{L}$  PCR MIX used in the reaction includes, in addition to  $\text{MgCl}_2$  and dNTPs, specific primers for the 16s rRNA coding region. The PCR tubes containing the reaction mixture were then transferred to the thermocycler device (Bio-Rad™ - MJ Mini thermal cycler, USA). The thermocycling protocol was as follows: 1 cycle of  $94^{\circ}\text{C}$  for 2 min, 35 cycles of  $94^{\circ}\text{C}$  for 15 sec,  $52^{\circ}\text{C}$  for 20 sec and  $72^{\circ}\text{C}$  for 35 sec, with a terminal step of 5 min at  $72^{\circ}\text{C}$ . After completion of the thermocycler step, the PCR product samples were transferred to electrophoresis (5 volts/cm) using GelRed® Prestain Plus 6X DNA loading dye (Biotium, USA) with 1.5% agarose/TBE gels. Then the UV illuminator gel documentary (Siemens,

Germany) was used to visualize a 280 bp amplicon. Positive and negative controls were also applied along with the samples (McAuliffe, Ellis, Ayling, & Nicholas, 2003; Tenk et al., 2006; Jain, Verma, & Pal, 2012).

### Statistical analysis

Data obtained are expressed as mean  $\pm$  SD. Using Excel and SPSS V.20 statistical applications,  $P < 0.01$  values were considered statistically important.

### Results

The PCR test of the current study indicated the presence of 280 bp fragments of 16s rRNA-specific coding gene of mycoplasma reflecting positive results, as shown in Fig. 1.

In general, 73.3% of the samples were taken from animals with different ocular lesions. The remainder of the 26.7% was collected without clinical evidence from healthy animals. Based on the findings of the polymerase chain reaction, overall positive samples were found to be 22.4% (26/116), 6.4% (2/31) in healthy animals, and 28.2% (24/85) in diseased animals (Fig. 2).

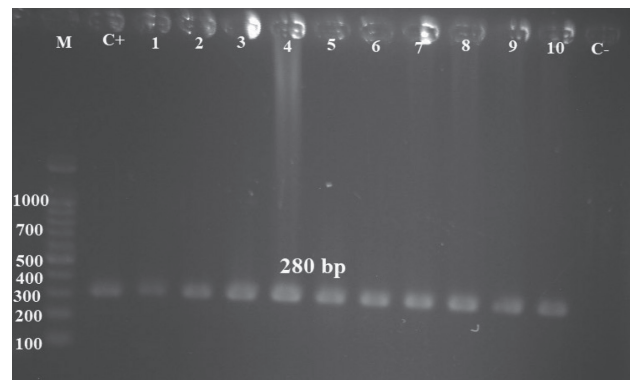


Fig. 1. Positive 280 bp bands of the Mycoplasma specified 16s rRNA gene coding region

Lane 1–10 shows eye swab samples. Lane C+ and Lane C– are both positive and negative controls. M: DNA ladder 100 bp.

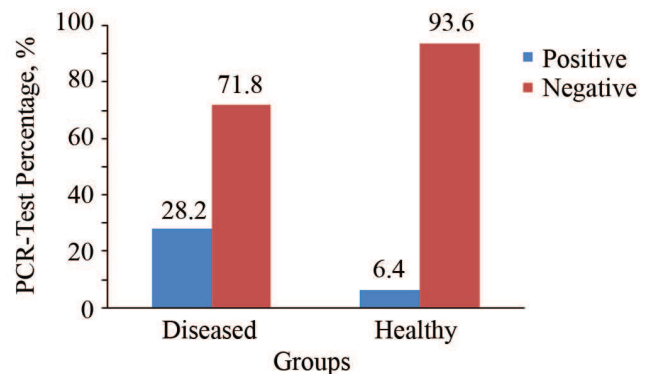


Fig. 2. Percentage of positive and negative results of the PRC test for both diseased and healthy animals

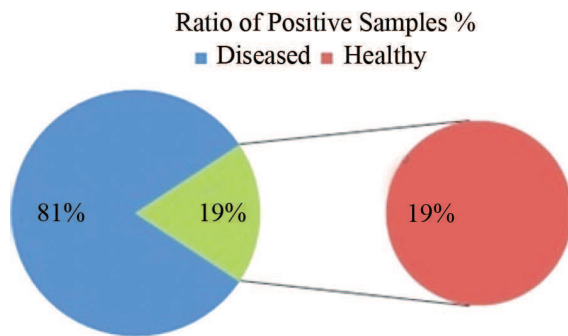


Fig. 3. The ratio of mycoplasma in healthy and diseased animals detected by PCR

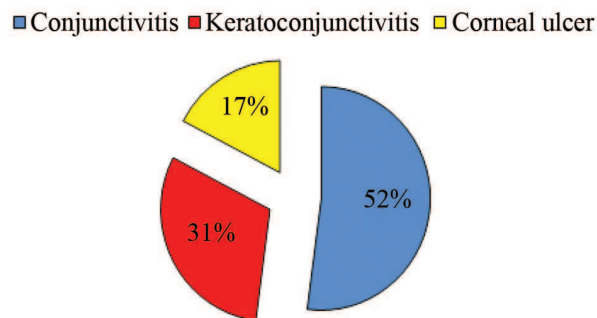


Fig. 4. Percentage of conjunctivitis, keratoconjunctivitis, and corneal ulcer in the positive samples of the diseased group

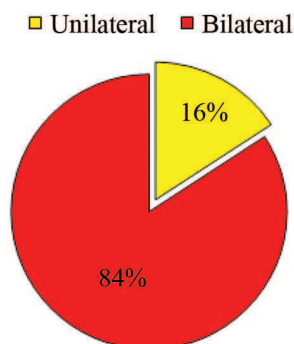


Fig. 5. Percentage of bilateral eye lesions

The ratio of identified microorganisms from diseased and healthy animals was 81% and 19%, respectively, revealing significant statistical differences (Fig. 3).

Conjunctivitis, keratoconjunctivitis and corneal ulcer were observed in 52%, 31% and 17% of the diseased animals, respectively, and 16% of the cases showed involvement of both eyes (bilateral infection) (Figs. 4 and 5).

### Discussion

*M. bovoculi* and *M. conjunctivae* are the two most clinically important species to cause conjunctivitis

and infectious bovine keratitis (IKC) (Romano et al., 2018, Tryland et al., 2017, Gupta et al., 2015).

In this study, a polymerase chain reaction was performed to determine the *Mycoplasma* species in the conjunctival sac of diseased and healthy calves and heifers.

In the current study, a 280 bp 16s rRNA fragment of *Mycoplasma* spp. was specifically detected. Besides, cross-amplification did not occur with other pathogens. The *Mycoplasma* spp. DNA sequence analysis (the data not shown) confirmed the positive result of the PCR test.

The total percentage of *Mycoplasma* spp. in eye swab samples was 22.4% (26/116). This percentage is lower than the proportion recorded by (Gupta et al., 2015) and (Raofi et al., 2016) who reported a ratio of 37.5% and 56.7%, respectively. The difference can relate to the number of samples included in the study, the study season, the age of the animals studied and the area. In the diseased animals, the positive percentage of *Mycoplasma* identified was 28.2, while in healthy animals it was 6.4. We disagree with the results (Schöttker-Wegner et al., 1990) of 34.2% and 41.2%, respectively, in ill and healthy cattle, as well as the findings of Raofi et al., (2016) who revealed 63.8% and 48.1% in infected and non-infected cattles. That can be attributed to the difference in both the total number of samples being examined and the season.

The present study shows that conjunctivitis, keratoconjunctivitis and corneal ulcers were found in 52%, 31% and 17% of the diseased group, respectively. Such findings are in line with those reported by (Sidal et al., 2007) who reported a ratio of 30.3%, 33.3%, and 36.4%, respectively. Infections of both eyes were detected in 16% of the cases, and this result is consistent with that of (Takele & Zerihun, 2000). Variation in virulence of different *Mycoplasma* spp., heat, dust, host immune status and likely concurrent infection with a bovine rhinotracheitis virus (bovine herpesvirus 1) or *Moraxella bovis* increases disease severity (Atkinson et al., 2008, Maunsell et al., 2011, Wilcock & Njaa, 2016).

Severe conjunctivitis with corneal opacity or ulceration is the most frequent and obvious sign of *Mycoplasma* ocular infection. Eyelid involvement with marked swelling is prominent. Conjunctivitis is prominent in many keratoconjunctivitis-producing infections (Schnee et al., 2015).

Corneal ulcers initially arise from the cytotoxic effect of the microorganism over 24 hours, resulting in corneal degradation (microscopically) without a sufficient inflammatory response (Nicholas et al., 2008a, Brooks, 2005). The corneal epithelium is eventually destroyed, followed by degradation of the keratocytes and degradation of the corneal stroma. An inflammatory response will then develop for several days leading to the development of large and deep corneal ulcers and oedema with stromal involvement, as well as corneal neovascularization (CNV) (Maggs, 2008).

## Conclusion

The study found that the percentage of *Mycoplasma* spp. in animals with eye lesions was greater than in healthy animals, but only showing its existence in healthy animals suggests the latent or asymptomatic nature. Hence, *Mycoplasma* spp. infection can contribute to the severity of disease-related lesions.

## References

- Underwood WJ, Blauwiekel R, Delano ML, Gillesby R, Mischler SA, and Schoell A. Biology and diseases of ruminants (sheep, goats, and cattle). Laboratory animal medicine: Elsevier 2015. P.623-94.
- Nicholas R, and Ayling R. Mycoplasma bovis: disease, diagnosis, and control. Research in veterinary science 2003.74(2), P. 105-12
- Maunsell FP, and Donovan GA. Mycoplasma bovis infections in young calves. Veterinary Clinics of North America: Food Animal Practice 2009.25(1), P. 139-77
- Aebi M, Bodmer M, Frey J, and Pilo P. Herd-specific strains of Mycoplasma bovis in outbreaks of mycoplasmal mastitis and pneumonia. Veterinary microbiology 2012. 157(3-4), P. 363-68
- Alberti A, Addis MF, Chessa B, Cubeddu T, Profiti M, Rosati S, Ruiu A, and Pittau M. Molecular and antigenic characterization of a Mycoplasma bovis strain causing an outbreak of infectious keratoconjunctivitis. Journal of Veterinary Diagnostic Investigation 2006. 18(1), P. 41-51
- Atkinson TP, Balish MF, and Waites KB. Epidemiology, clinical manifestations, pathogenesis and laboratory detection of Mycoplasma pneumoniae infections. FEMS microbiology reviews 2008. 32(6), P. 956-73
- Ayling R, Bashiruddin S, and Nicholas R. Mycoplasma species and related organisms isolated from ruminants in Britain between 1990 and 2000. Veterinary Record 2004. 155(14), P. 413-16
- Björnelius E, Jensen JS, and Lidbrink P. Conjunctivitis associated with Mycoplasma genitalium infection. Clinical Infectious Diseases 2004. 39(7), P. e67-e69
- Brooks DE. Equine stromal and endothelial keratopathies: medical management of stromal abscesses, eosinophilic keratitis, calcific band keratopathy, striate band opacities, and endotheliitis in the horse. Clinical Techniques in Equine Practice 2005. 4(1), P. 21-28
- Brooks DE, Matthews A, and Clode AB. Diseases of the cornea. Equine ophthalmology 2017.3,P. 252-368
- Calcutt M, Lysnyansky I, Sachse K, Fox L, Nicholas R, and Ayling R. Gap analysis of Mycoplasma bovis disease, diagnosis and control: an aid to identify future development requirements. Transboundary and emerging diseases 2018. 65, P. 91-109
- Gerdtzen ZP. Medium Design, Culture Management, and the PAT Initiative. Applied Bioengineering 2017. P. 2:8
- Gould S, Dewell R, Tofflemire K, Whitley RD, Millman ST, Opriessnig T, Rosenbusch R, Trujillo J, and O'Connor AM. Randomized blinded challenge study to assess association between Moraxella bovoculi and infectious bovine keratoconjunctivitis in dairy calves. Veterinary microbiology 2013. 164(1-2), P. 108-15
- Gupta S, Chahota R, Bhardwaj B, Malik P, Verma S, and Sharma M. Identification of chlamydiae and mycoplasma species in ruminants with ocular infections. Letters in applied microbiology 2015. 60(2), P. 135-39
- Kharel R, Poddar C, and Biswas J. Pathology of Endophthalmitis. Endophthalmitis: Springer 2018. P. 333-41.
- Klößner A, Bühl H, Viollier P, and Henrichfreise B. Deconstructing the chlamydial cell wall. Biology of Chlamydia: Springer, 2016. P. 1-33.

## Conflicts of Interest

The authors guarantee that the substances discussed at some stage in this manuscript are not affiliated with any business or entity having a financial interest or non-financial interest.

## Acknowledgments

All thanks and appreciation to the workers at the cow breeding stations and industrial dairy farms in Al-Najaf province, Iraq, for facilitating the sampling collection process

- Loria G, Puleio R, and Nicholas R. Contagious Agalactia: economic losses and good practice. J Bacteriol Mycol 2018. 5(5), P. 1076
- Maggs DJ. CORNEA AND SCLERA 10. Slatter's fundamentals of veterinary ophthalmology 2008. P. 175
- Matilda A-A, Linda AA, Cornelius A, Korley KN, and Paa TA. Activity of Mycoplasma synoviae in Commercial Chickens in Ghana: Serological Evidence. Advances in Life Science and Technology 2018.62
- Maunsell F, Woolums A, Francoz D, Rosenbusch RF, Step DL, Wilson DJ, and Janzen ED. Mycoplasma bovis infections in cattle. Journal of Veterinary Internal Medicine 2011. 25(4), P. 772-83
- Naveed M, Chaudhry Z, Bukhari SA, Meer B, and Ashraf H. Antibiotics resistance mechanism. Antibiotics and Antimicrobial Resistance Genes in the Environment: Elsevier, 2020:292-312.
- Nicholas R, Ayling R, and Loria G. Ovine mycoplasmal infections. Small Ruminant Research 2008. 76(1-2), P. 92-98
- Nicholas R, Ayling R, and McAuliffe L. Mycoplasma diseases of ruminants: CABI 2008.
- Nicholas R, Baker S, Ayling R, and Stipkovits L. Mycoplasma infections in growing cattle. Cattle Practice 2000. 8(2), P. 115-18
- Pilo P, Frey J, and Vilei EM. Molecular mechanisms of pathogenicity of Mycoplasma mycoides subsp. mycoides SC. The Veterinary Journal 2007. 174(3), P. 513-21
- Pup HA, and Lindley EP. Diseases of Cattle in the Tropics: Economic and Zoonotic Relevance 2013;6:255
- Raofi A, Mottaghian P, Madadgar O, and Badiei A. A Survey on The Prevalence of Mycoplasmal Infections in Infectious Bovine Keratoconjunctivitis 2016
- Razin S. 1. Mycoplasma taxonomy and ecology. AMERICAN SOCIETY FOR MICROBIOLOGY, WASHINGTON, DC(USA). 1992. P. 3-22
- Razin S, Yogev D, and Naot Y. Molecular biology and pathogenicity of mycoplasmas. Microbiology and molecular biology reviews 1998. 62(4), P. 1094-156
- Romano JS, Mørk T, Laaksonen S, Romano JS, Torill M, Sauli L, Erik Å, Ingebjørg H, Nymo, Marianne S, and Morten T. Infectious keratoconjunctivitis in semi-domesticated Eurasian tundra reindeer (Rangifer tarandus tarandus): microbiological study of clinically affected and unaffected animals with special reference to cervid herpesvirus 2. BMC veterinary research 2018. 14(1), P15
- Rossetti BC, Frey J, and Pilo P. Direct detection of Mycoplasma bovis in milk and tissue samples by real-time PCR. Molecular and cellular probes 2010. 24(5), P. 321-23
- Salih B, and Rosenbusch R. Cross-reactive proteins among eight bovine mycoplasmas detected by monoclonal antibodies. Comparative immunology, microbiology and infectious diseases 2001. 24(2), P. 103-11
- Schnee C, Heller M, Schubert E, and Sachse K. Point prevalence of infection with Mycoplasma bovoculi and Moraxella spp. in cattle at different stages of infectious bovine keratoconjunctivitis. The Veterinary Journal 2015. 203(1), P. 92-96
- Schöttker-Wegner H, Binder A, and Kirchhoff H. Detection of mycoplasmas in eye swab specimens of cattle. Zentralblatt

- fur Veterinarmedizin. Reihe B. Journal of veterinary medicine. Series B 1990. 37(6), P. 436-41
35. Sidal M, Kilic A, Unuvar E, Fatma O, Mustafa O, Ali A, Derya A, Kaya K, and Hayati B. Frequency of *Chlamydia pneumoniae* and *Mycoplasma pneumoniae* Infections in Children. *Journal of tropical pediatrics* 2007. 53(4), P. 225-31
  36. Smith PF. *The biology of mycoplasmas*: Elsevier 2012.
  37. Touati A, Peuchant O, Jensen JS, Bébéar C, and Pereyre S. Direct detection of macrolide resistance in *Mycoplasma genitalium* isolates from clinical specimens from France by use of real-time PCR and melting curve analysis. *Journal of clinical microbiology* 2014. 52(5), P. 1549-55
  38. Tryland M, Romano JS, Marcin N, Ingebjørg HN, Terje DJ, Karen KS, and Torill M. Cervid herpesvirus 2 and not *Moraxella bovoculi* caused keratoconjunctivitis in experimentally inoculated semi-domesticated Eurasian tundra reindeer. *Acta Veterinaria Scandinavica* 2017. 59(1), P. 23
  39. Takele G, and Zerihun A. Epidemiology of Infectious Keratoconjunctivitis in Cattle in South-east Ethiopia. *Journal of Veterinary Medicine Series A* 2000. 47(3), P. 169-73
  40. Volokhov DV, Graham LJ, Brorson KA, and Chizhikov VE. *Mycoplasma* testing of cell substrates and biologics: Review of alternative non-microbiological techniques. *Molecular and cellular probes* 2011. 25(2-3), P. 69-77.

Received 28 June 2020

Accepted 25 July 2020